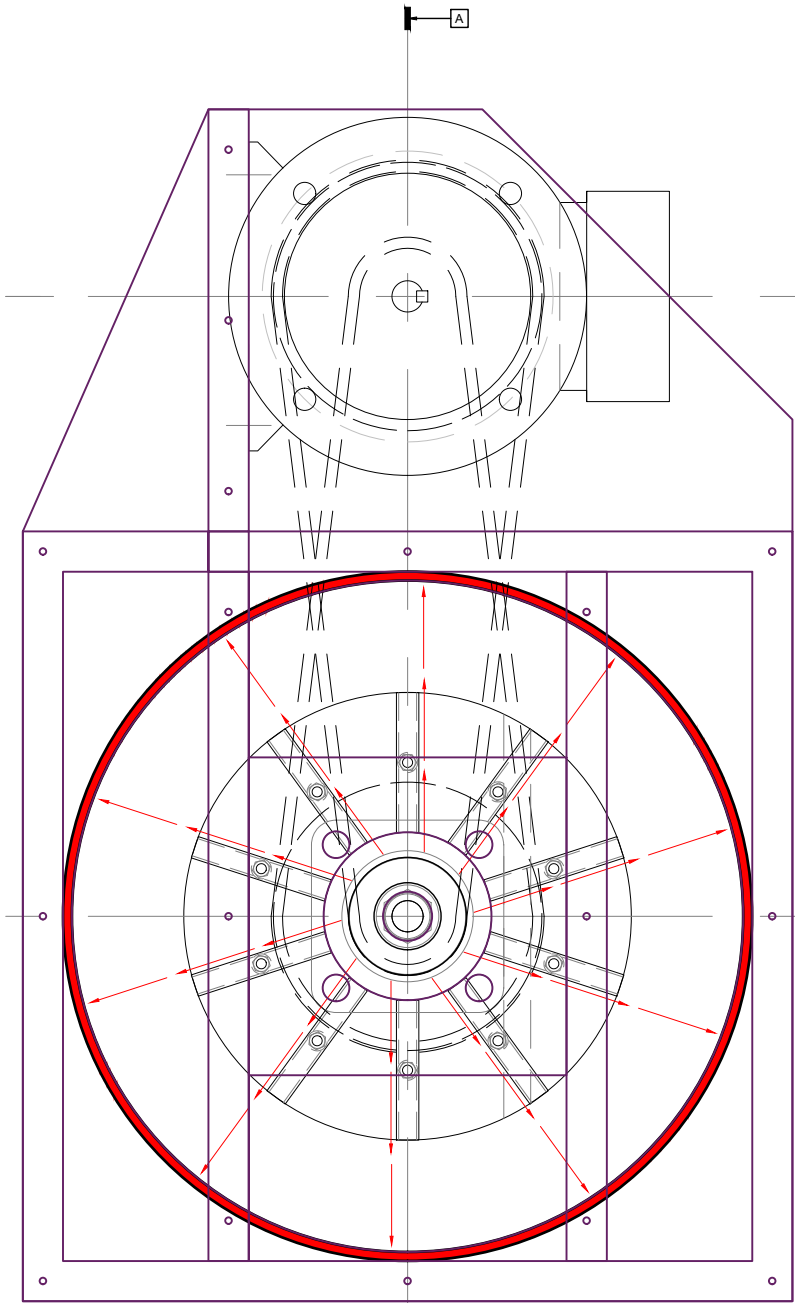


SECTION A-A - THRU CENTRELINE

BILL OF MATERIALS			
1	WIDE V-BELT	CWB22x8x788/825-8717-1-1, 28°, Polyester	QTY1
2	CONTROL PULLEY	BERGES R100b BORE 14mm - 14000031	QTY1
3	SPRING PULLEY	BERGES F100b BORE 14mm - 14000380	QTY1
4	CONTROL DEVICE	BERGES SV1 for R100b BORE 14mm - 14002984	QTY1
5	FIXING DISC	DIN478, TO SUIT 14mm BORE, DIN332 SHAFT END	QTY1
6	SET SCREW	ISO 4762 CAP HEAD, HEX SOCKET, M5, 22mm LNG, STEEL	QTY1
7	CIRCLIP	INTERNAL, BORE 14mm 1mm THK DIN472 STEEL	QTY1
8	MOTOR	ASYNCHRONOUS, 1PH, 230V, 50Hz, 0.37KW (0.5hp), 4 POLE (1500RPM), 71 FRAME	QTY1
9	BEARING UNIT	UCF204, 4 HOLE FLANGE BEARING, 20mm SHAFT	QTY2
10	SHAFT	CUSTOM - STOCK REQUIREMENT 20mm MAX OD, 200mm LONG, STEEL	QTY1
11	IMPACT RING	308mm OD, 300mm ID, 75mm LONG, STEEL	QTY1
12	IMPELLER CONE SPACER	CUSTOM - STOCK REQUIREMENT 52.5MM MAX OD, 21.5mm LONG, ALUMINIUM	QTY1
13	NUT	M14 HEX FLANGE NUT UNSERATED ISO4161 STEEL	QTY1
14	IMPELLER SUB ASSEMBLY	IMPELLER SUB-ASSEMBLY	QTY 1
15	ENCLOSURE	TIMBER SUB-ASSEMBLY	QTY 1
16	KEY	5mm METRIC PARALLEL KEY, 20mm LONG	QTY 3



SECTION B-B - PLAN VIEW WITH HOPPER REMOVED FOR CLARITY

Iss	Description	Drawn	Chk'd	Date
1	Updated to match prototype	AJV	-	25/11/21
0	Original Drawing Issue	AJV	-	05/09/21



Client
Project Title
DEHULLER V1

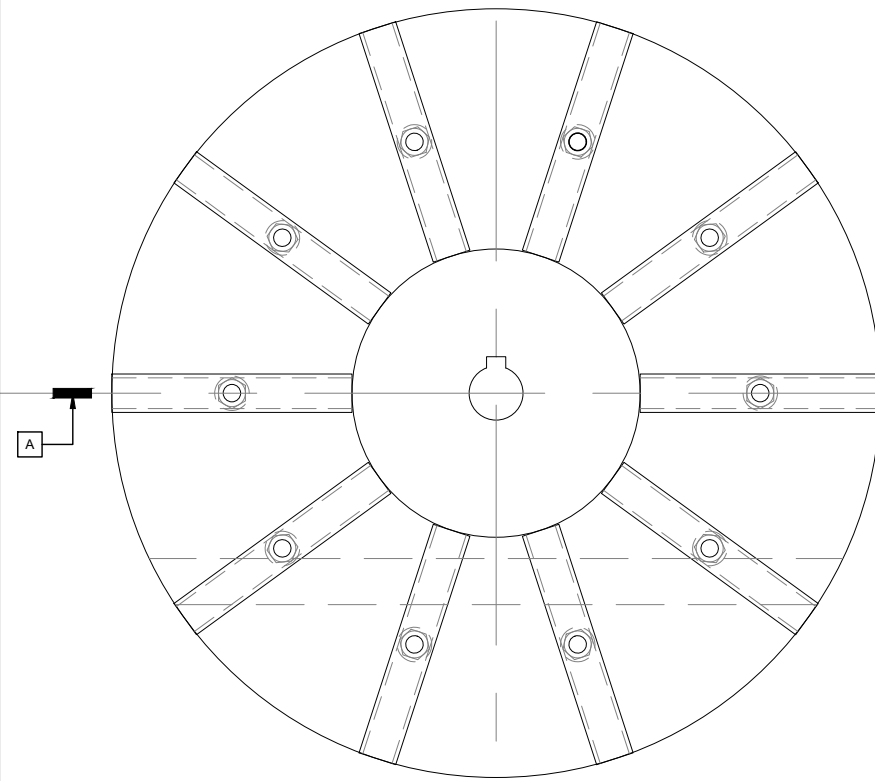
Drawing Title
GENERAL ASSEMBLY

Darachbeg Croft
Darachbeg Croft Agricultural Engineering
Muirshearlich Fort William PH33 7PB

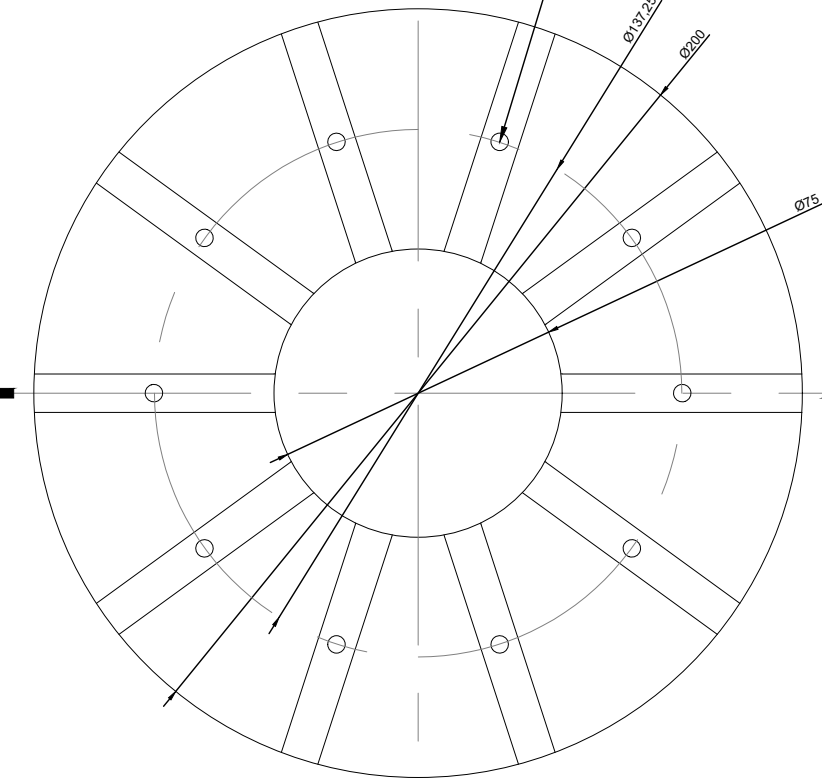
Scale Bar

Scale	Prints from this drawing are UNCONTROLLED unless otherwise indicated	Original Size	A3
Project No	Drawing No	Issue	
P001	DH_V1_001	1	

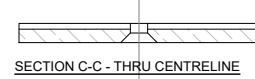
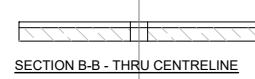
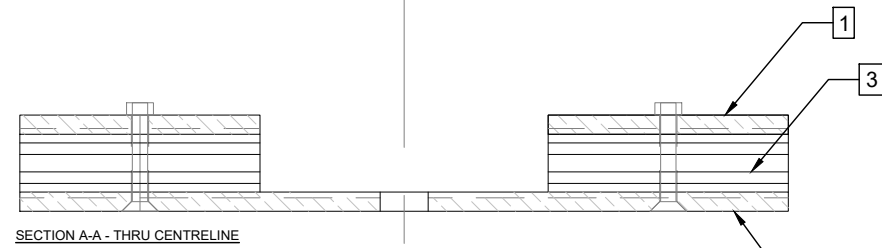
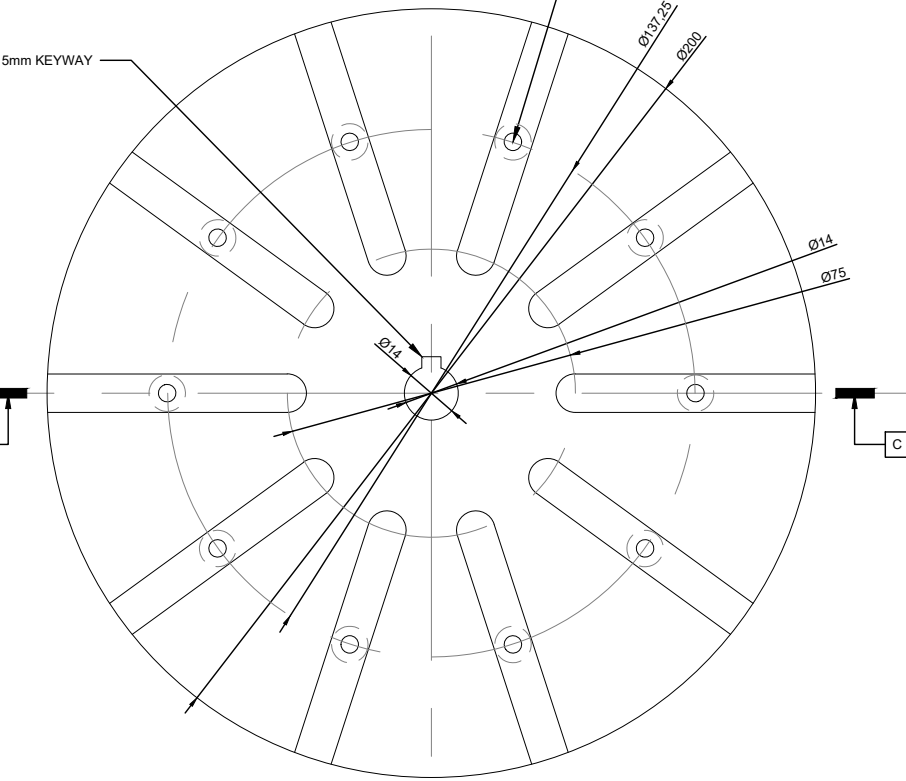
IMPELLER ASSEMBLY



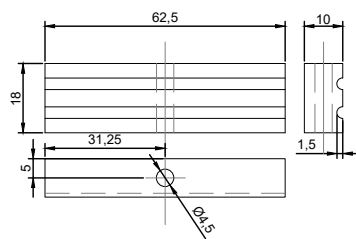
PART A - IMPELLER TOP PLATE



PART B - IMPELLER BOTTOM PLATE



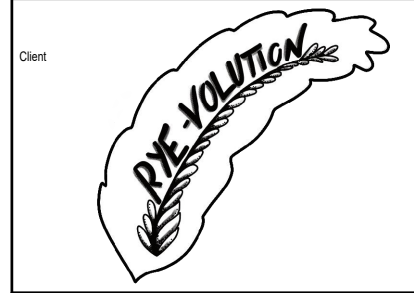
PART C - IMPELLER VANE



BILL OF MATERIALS

QTY	DESCRIPTION	REQUIREMENT	QTY
1	IMPELLER TOP PLATE	CUSTOM - STOCK ALUMINIUM PLATE 250SQ 5mm THK	1
2	IMPELLER BOTTOM PLATE	CUSTOM - STOCK ALUMINIUM PLATE 250SQ 5mm THK	1
3	IMPELLER VANE	CUSTOM - STOCK ALUMINIUM BAR 18mm x 10mm x 65mm EACH	10
4	M4 SET SCREW	M4 STEEL HEX DRIVE C/SUNK 25mm THREAD LENGTH	10
5	M4 NUT	M4 STEEL NYLON LOCK NUT	10

Iss	Description	Drawn	Chk'd	Date
1	Updated to match prototype	AJV	-	11/11/21
0	Original Drawing Issue	AJV	-	11/09/21



Project Title
DEHULLER V1

Drawing Title
IMPELLER

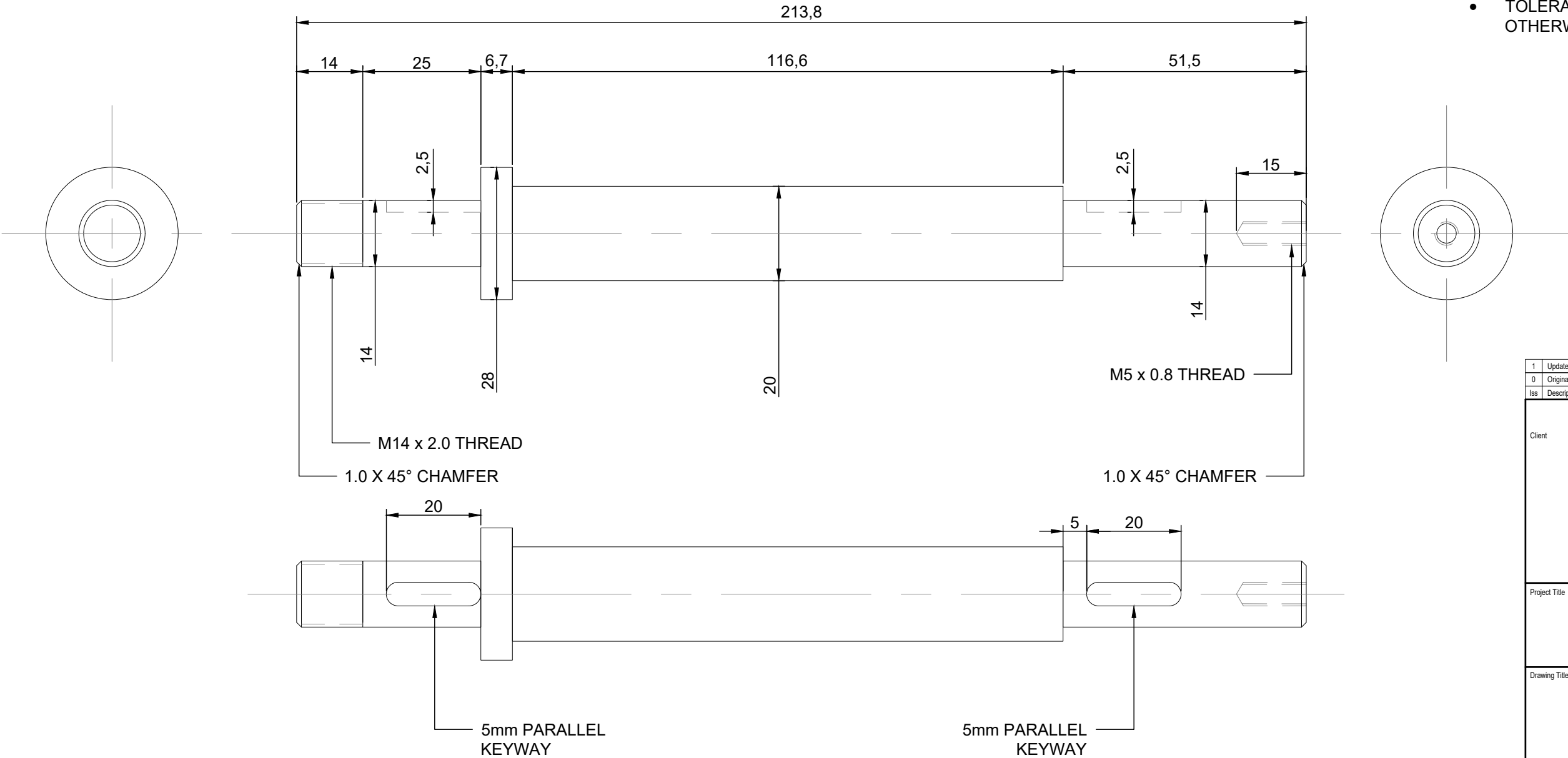


Scale Bar

Scale VARIES	Prints from this drawing are UNCONTROLLED unless otherwise indicated	Original Size A3
Project No P001	Drawing No DH_V1_002	Issue 1

NOTES

- MATERIAL - 304 STAINLESS STEEL
- FABRICATION METHOD - LATHE AND MILL
- FINISH - AS MACHINED
- DIMENSIONS - mm
- TOLERANCE ±0.5mm UNLESS OTHERWISE STATED



1	Updated to match prototype	AJV	-	11/11/21
0	Original Drawing Issue	AJV	-	11/09/21
Iss	Description	Drawn	Chk'd	Date



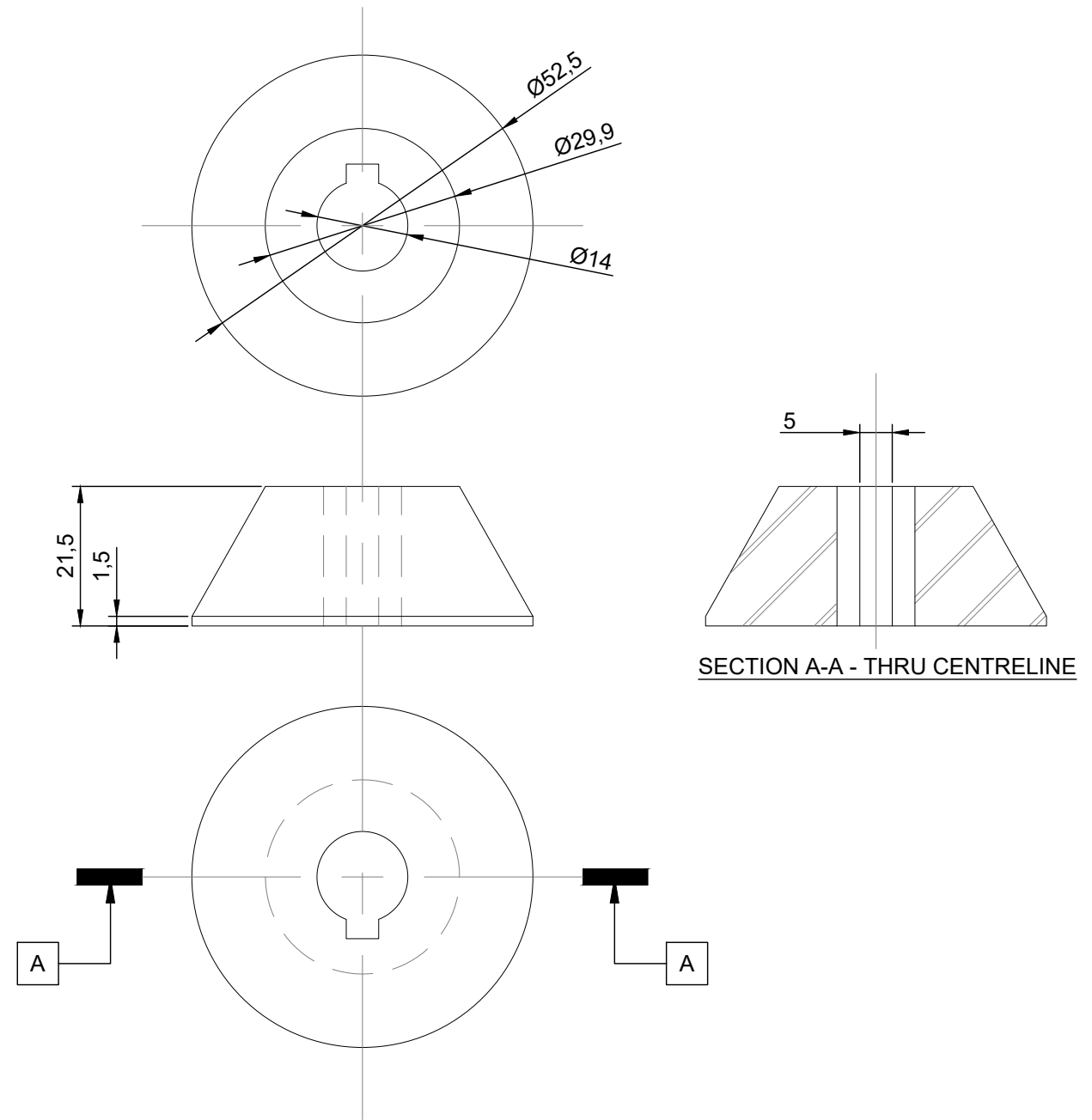
Project Title
DEHULLER V1

Drawing Title
MAIN SHAFT

Darachbeg Croft
Darachbeg Croft Agricultural Engineering
Muirshearlich Fort William PH33 7PB

Scale Bar

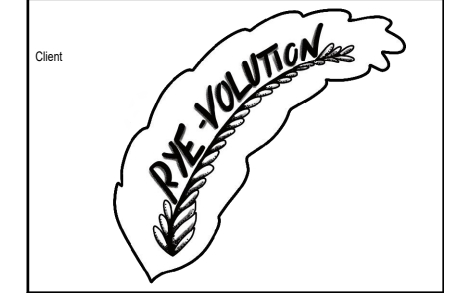
Scale	1:1	Prints from this drawing are UNCONTROLLED unless otherwise indicated	Original Size A3
Project No	P001	Drawing No DH_V1_003	Issue 1



NOTES

- MATERIAL - 6082T6 ALUMINUM
ROUND BAR ALUMINIUM
- FABRICATION METHOD -
LATHE
- FINISH - AS MACHINED
- DIMENSIONS - mm
- TOLERANCE $\pm 0.5\text{mm}$ UNLESS
OTHERWISE STATED

1	Updated to match prototype	AJV	-	11/11/21
0	Original Drawing Issue	AJV	-	11/09/21
Iss	Description	Drawn	Chk'd	Date



Project Title

DEHULLER V1

Drawing Title

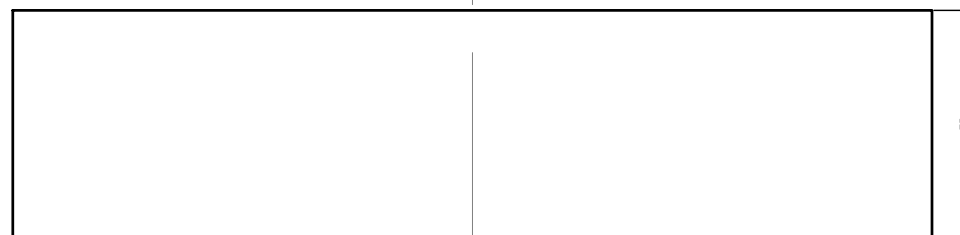
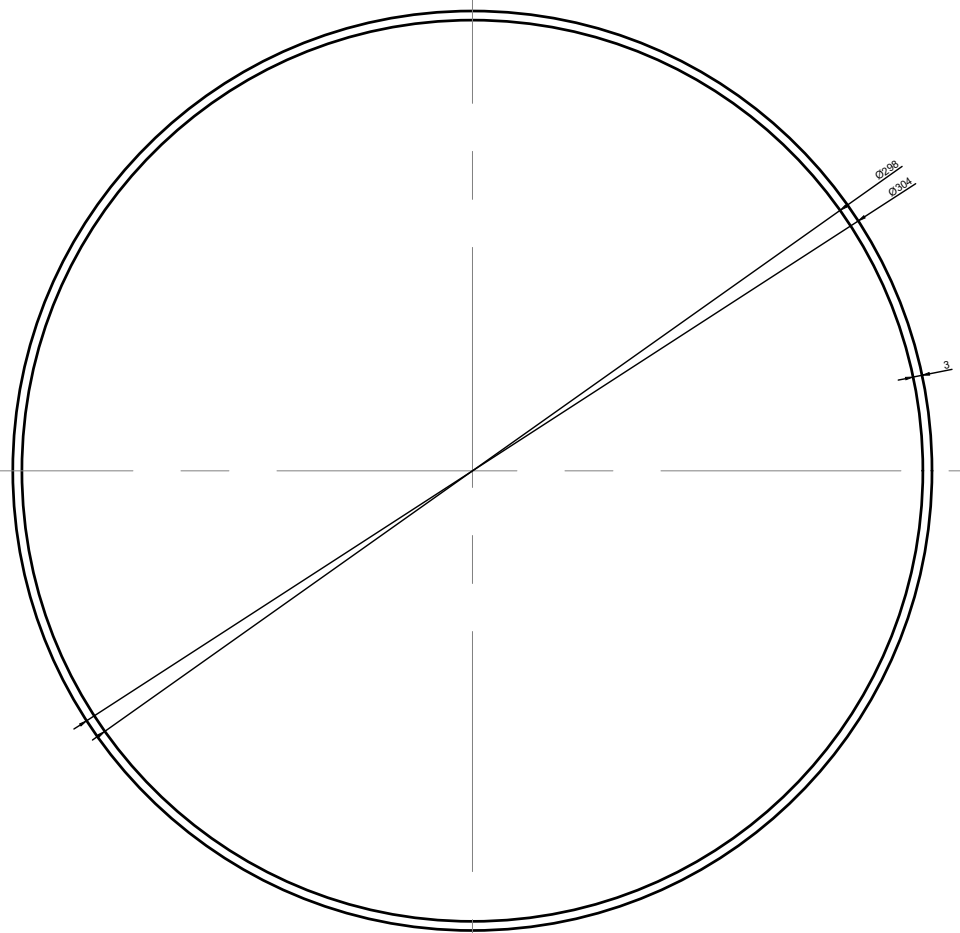
IMPELLER CONE

**Darachbeg
Croft**

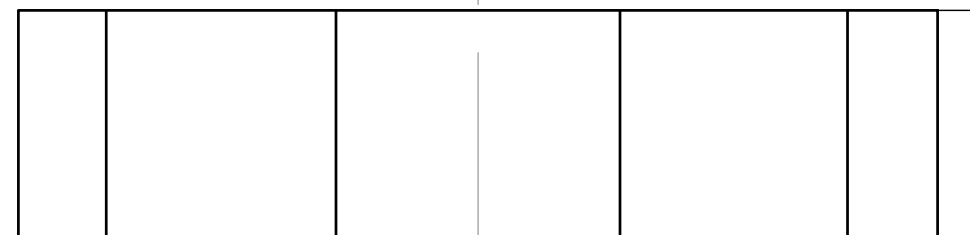
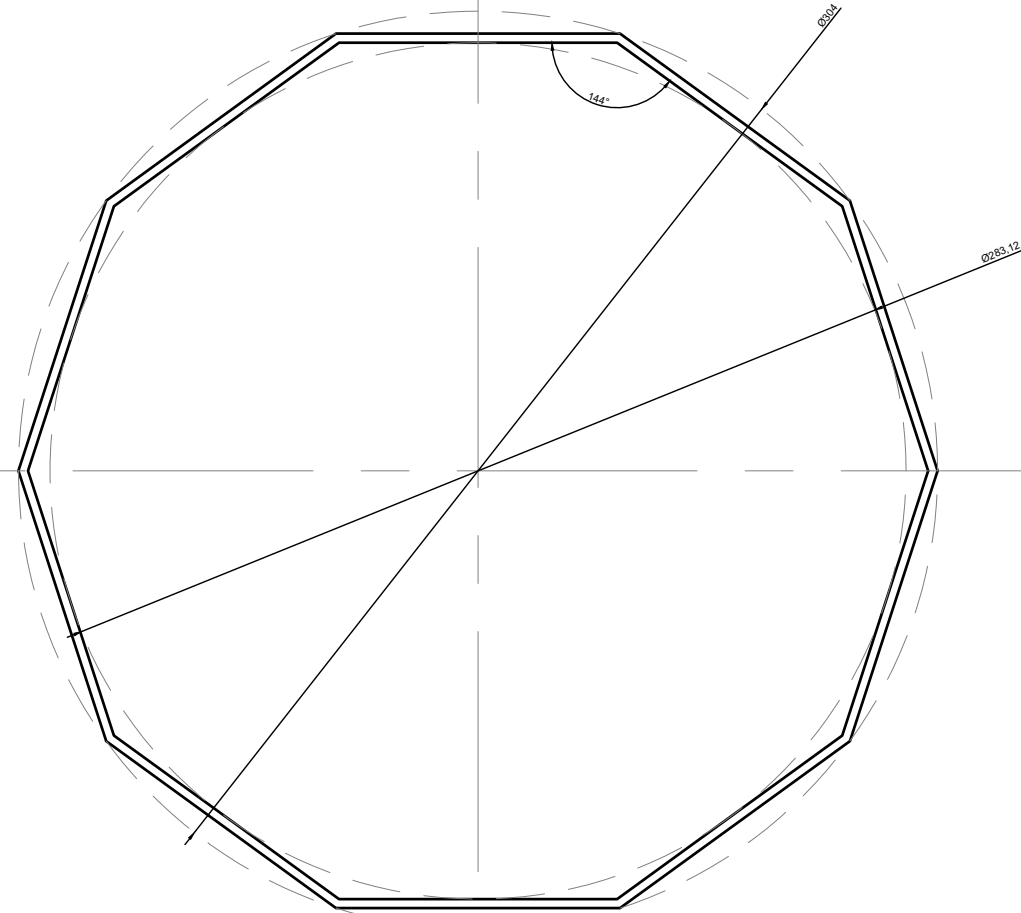
Darachbeg Croft Agricultural Engineering
Muirshearich Fort William PH33 7PB

Scale Bar

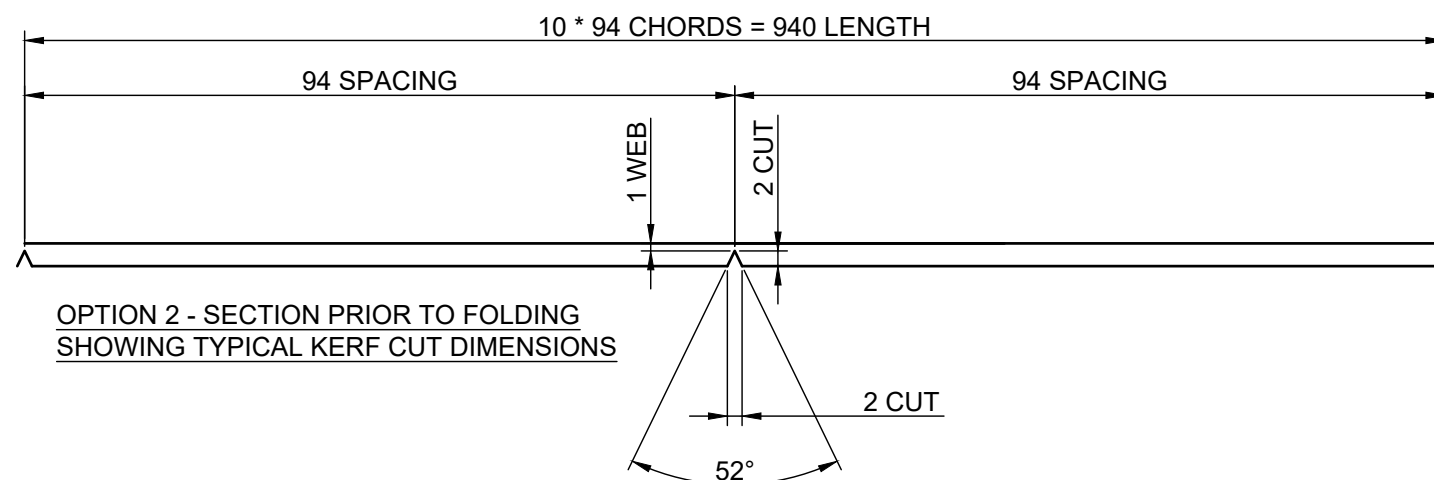
Scale	Prints from this drawing are UNCONTROLLED unless otherwise indicated	Original Size A3
Project No P001	Drawing No DH_V1_004	Issue 1



OPTION 1 - ROUND IMPACT RING



OPTION 2 - DECAGON IMPACT RING



OPTION 2 - SECTION PRIOR TO FOLDING
SHOWING TYPICAL KERF CUT DIMENSIONS

NOTES

- MATERIAL - 304 STAINLESS STEEL
- FABRICATION METHOD - RING ROLL OR FOLD
- FINISH - AS FABRICATED
- DIMENSIONS - mm
- TOLERANCE $\pm 0.5\text{mm}$ UNLESS OTHERWISE STATED

1	Updated to match prototype	AJV	-	11/11/21
0	Original Drawing Issue	AJV	-	11/09/21
Iss	Description	Drawn	Chk'd	Date



Project Title
DEHULLER V1

Drawing Title
IMPACT RING

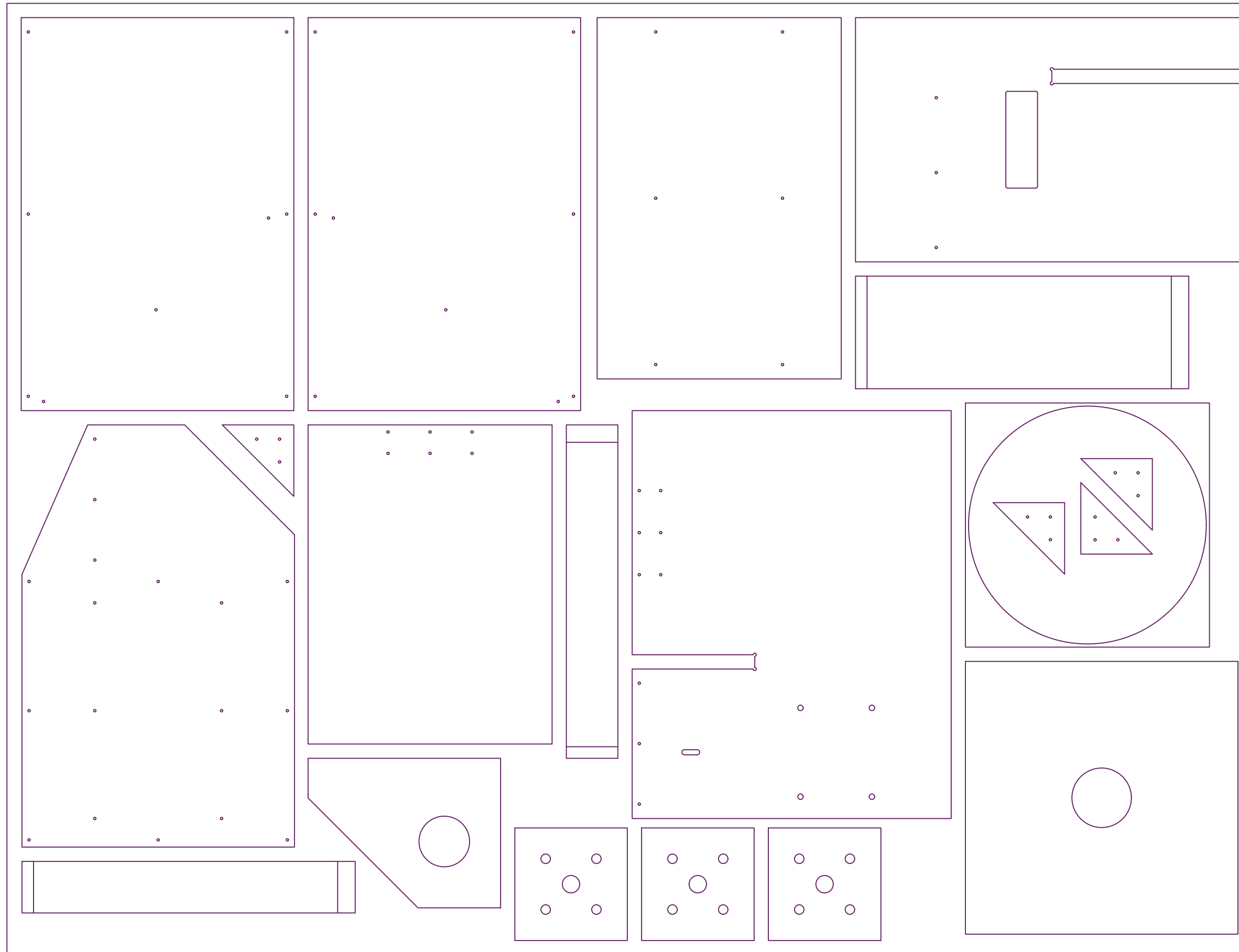
Darachbeg Croft
Darachbeg Croft Agricultural Engineering
Muirshearlich Fort William PH33 7PB



Scale Bar

Scale 1:2.5 & 1:1	Prints from this drawing are UNCONTROLLED unless otherwise indicated	Original Size A3
Project No P001	Drawing No DH_V1_005	Issue 1

NOTES

- MATERIAL - MARINE PLYWOOD
18mm THICK, $\frac{3}{4}$ SHEET (1800mm x 1200mm)
- FABRICATION METHOD - CNC ROUTING FROM SINGLE SHEET - REFER TO DWG FILE
- FINISH - AS MACHINED
- HOLES 3mm DIAMETER FOR WOOD SCREWS; CHAMFERED ONE SIDE
- DIMENSIONS - mm
- TOLERANCE ± 0.5 mm UNLESS OTHERWISE STATED



Iss	Description	Drawn	Chk'd	Date
0	Original Drawing Issue	AJV	-	25/11/21
Client				
				
Project Title				
DEHULLER V1				
Drawing Title				
ENCLOSURE				
				
<small>Darachbeg Croft Agricultural Engineering Muirshearlich Fort William PH33 7PB</small>				
Scale Bar				
Scale	Prints from this drawing are UNCONTROLLED unless otherwise indicated			Original Size A3
Project No P001	Drawing No DH_V1_006	Issue 0		