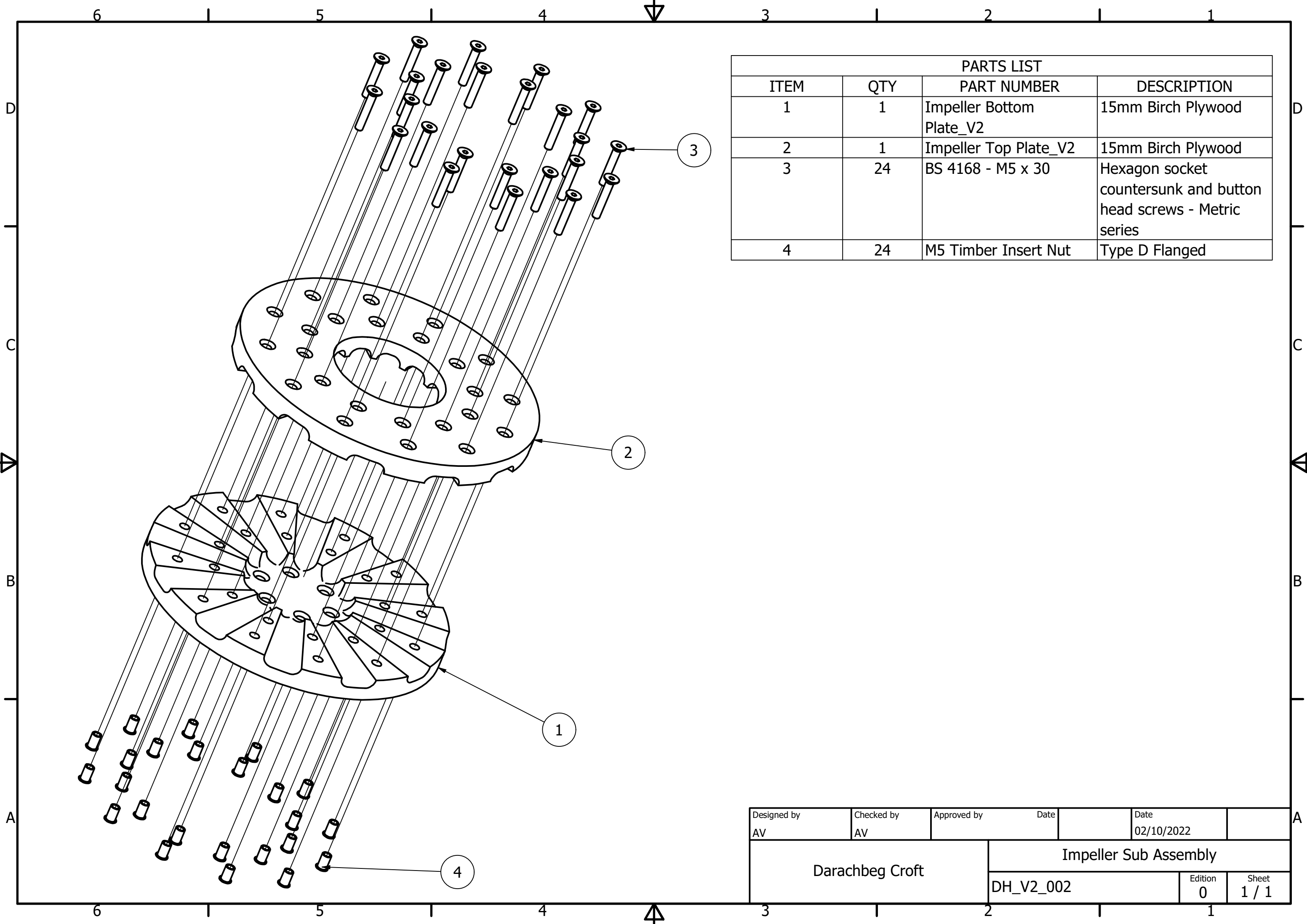


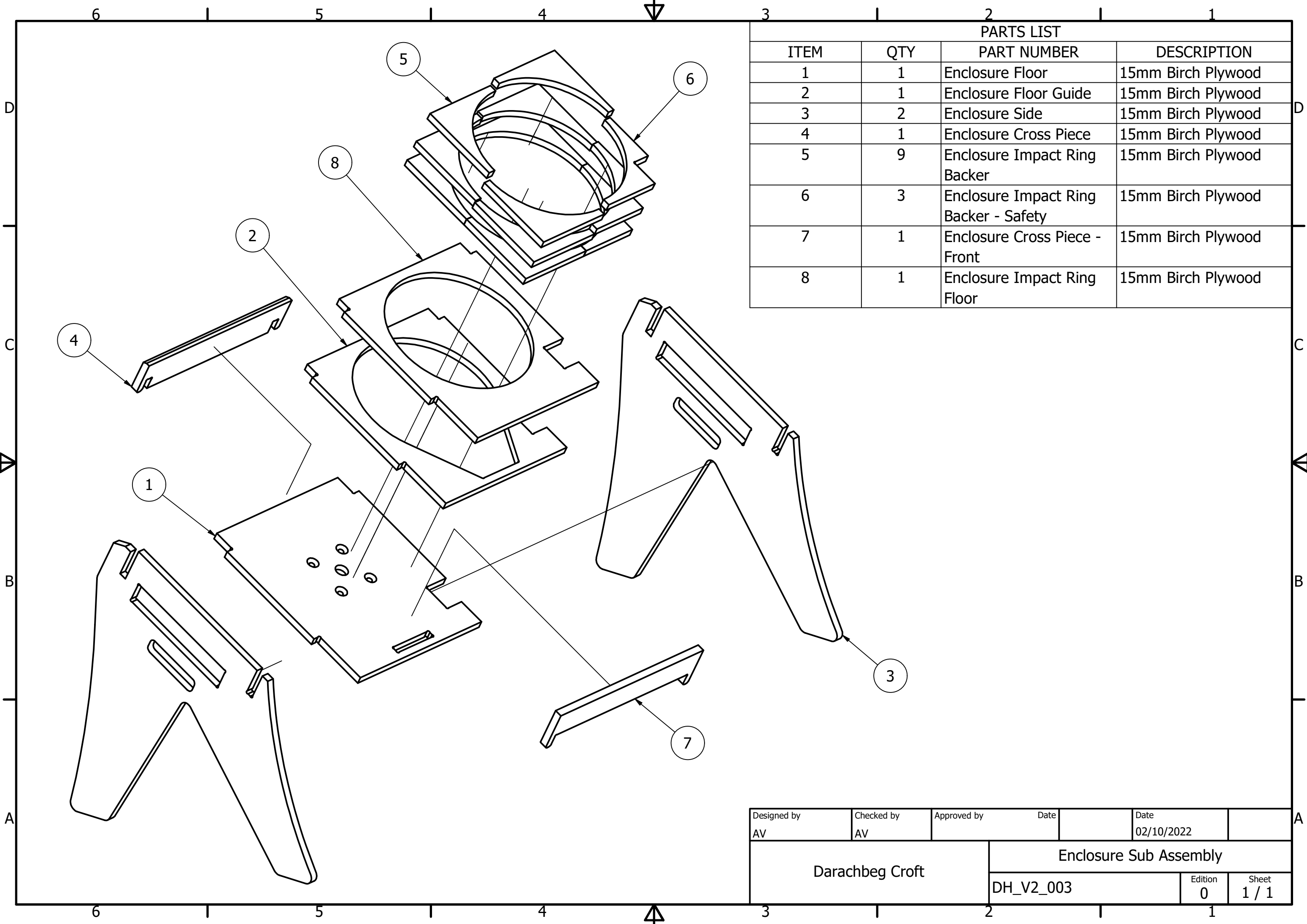
PARTS LIST			
ITEM	QTY	PART NUMBER	DESCRIPTION
1	1	DH_V2_006	Rotor Hub
2	1	XCSD3719P20	Safety Limit Switch
3	1	70382163	0.25kW (0.33hp) SP 2P motor 63 Frame
4	2	DIN 472 - 11x1	Retaining rings for bores
5	1	DH_V2_005	Impact Ring
6	1	DH_V2_003	Enclosure Sub-Assembly
7	1	DH_V2_004	Hopper Sub-assembly
8	1	DH_V2_002	Impeller Sub-Assembly
9	6	BS 4168 - M6 x 20	Hexagon socket countersunk and button head screws - Metric series
10	1	BS 4168 - M4 x 35	Hexagon Socket Head Cap Screw
11	1	DH_V2_008	Rotor Hub Washer
12	4	BS 4168 - M10 x 40	Hexagon socket countersunk and button head screws - Metric series
13	4	ISO 4032 - M10	Hexagon nuts, style 1- Product grade A and B

Designed by AV	Checked by AV	Approved by	Date	Date 02/10/2022
Darachbeg Croft		V2 Dehuller General Assembly		
		DH_V2_001	Edition 0	Sheet 1 / 1



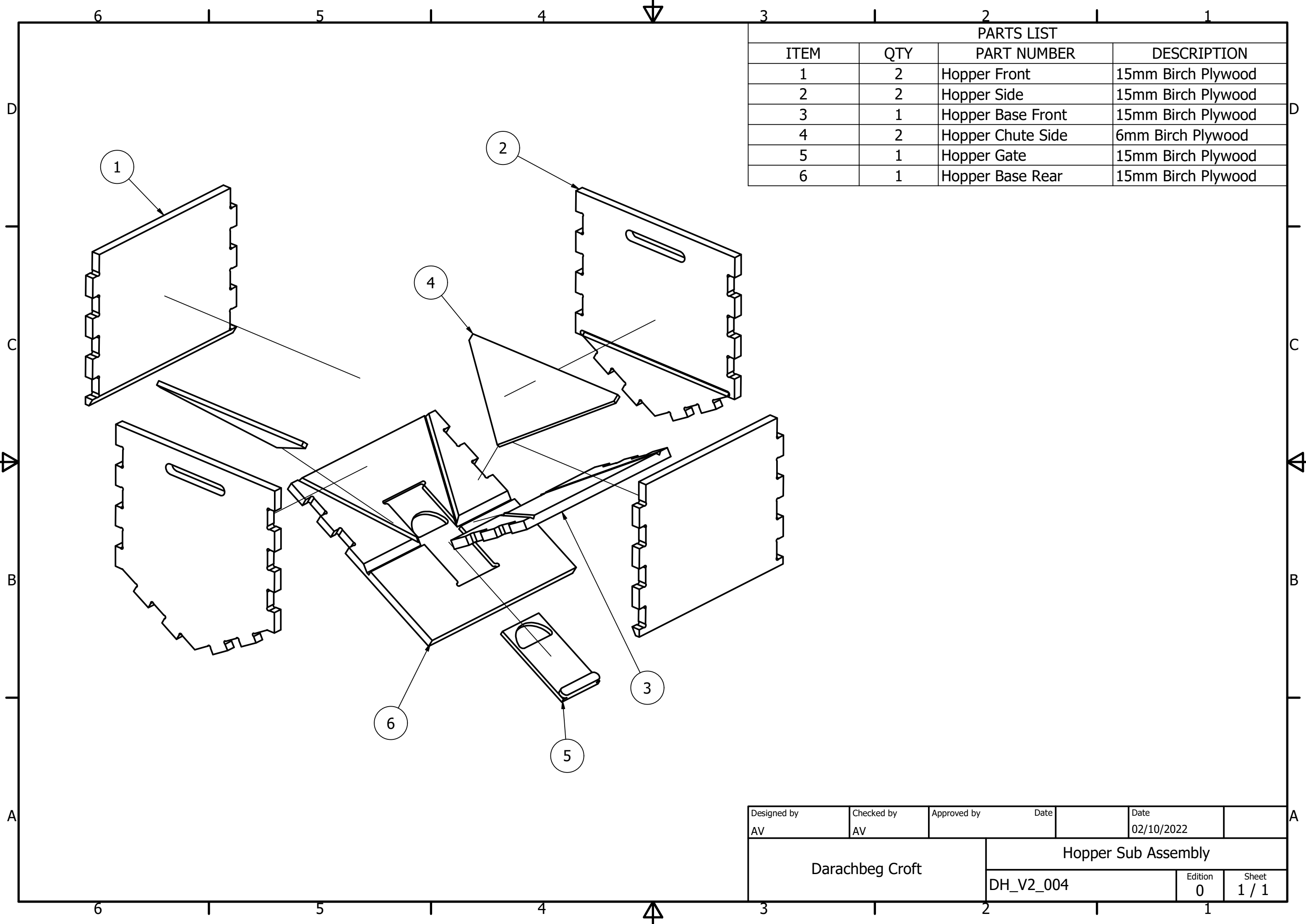
PARTS LIST			
ITEM	QTY	PART NUMBER	DESCRIPTION
1	1	Impeller Bottom Plate_V2	15mm Birch Plywood
2	1	Impeller Top Plate_V2	15mm Birch Plywood
3	24	BS 4168 - M5 x 30	Hexagon socket countersunk and button head screws - Metric series
4	24	M5 Timber Insert Nut	Type D Flanged

Designed by AV	Checked by AV	Approved by	Date	Date 02/10/2022
Darachbeg Croft		Impeller Sub Assembly		
		DH_V2_002	Edition 0	Sheet 1 / 1



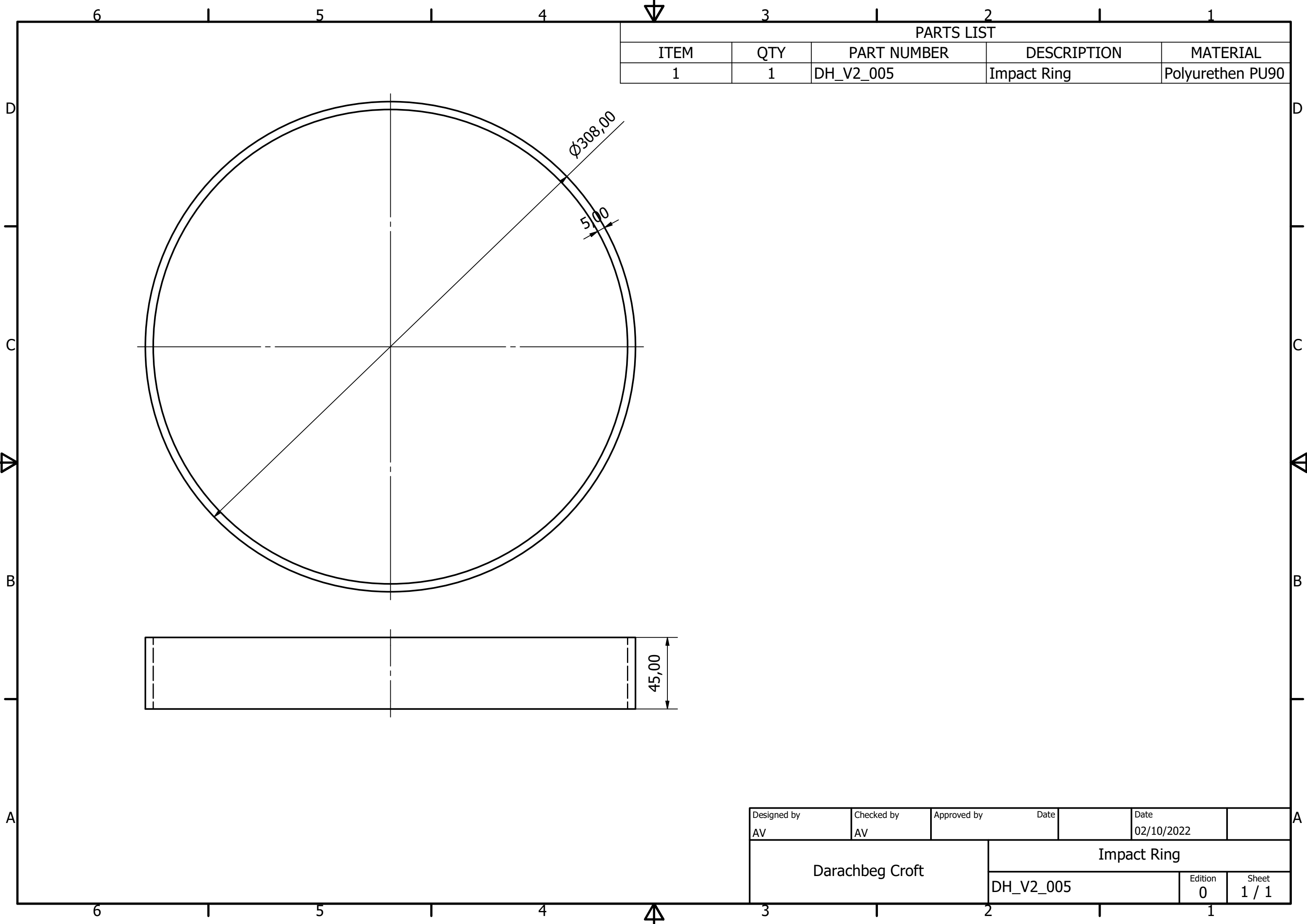
PARTS LIST			
ITEM	QTY	PART NUMBER	DESCRIPTION
1	1	Enclosure Floor	15mm Birch Plywood
2	1	Enclosure Floor Guide	15mm Birch Plywood
3	2	Enclosure Side	15mm Birch Plywood
4	1	Enclosure Cross Piece	15mm Birch Plywood
5	9	Enclosure Impact Ring Backer	15mm Birch Plywood
6	3	Enclosure Impact Ring Backer - Safety	15mm Birch Plywood
7	1	Enclosure Cross Piece - Front	15mm Birch Plywood
8	1	Enclosure Impact Ring Floor	15mm Birch Plywood

Designed by AV	Checked by AV	Approved by	Date	Date 02/10/2022
Darachbeg Croft		Enclosure Sub Assembly		
		DH_V2_003	Edition 0	Sheet 1 / 1



PARTS LIST			
ITEM	QTY	PART NUMBER	DESCRIPTION
1	2	Hopper Front	15mm Birch Plywood
2	2	Hopper Side	15mm Birch Plywood
3	1	Hopper Base Front	15mm Birch Plywood
4	2	Hopper Chute Side	6mm Birch Plywood
5	1	Hopper Gate	15mm Birch Plywood
6	1	Hopper Base Rear	15mm Birch Plywood

Designed by AV	Checked by AV	Approved by	Date 02/10/2022	
Darachbeg Croft		Hopper Sub Assembly		
		DH_V2_004	Edition 0	Sheet 1 / 1

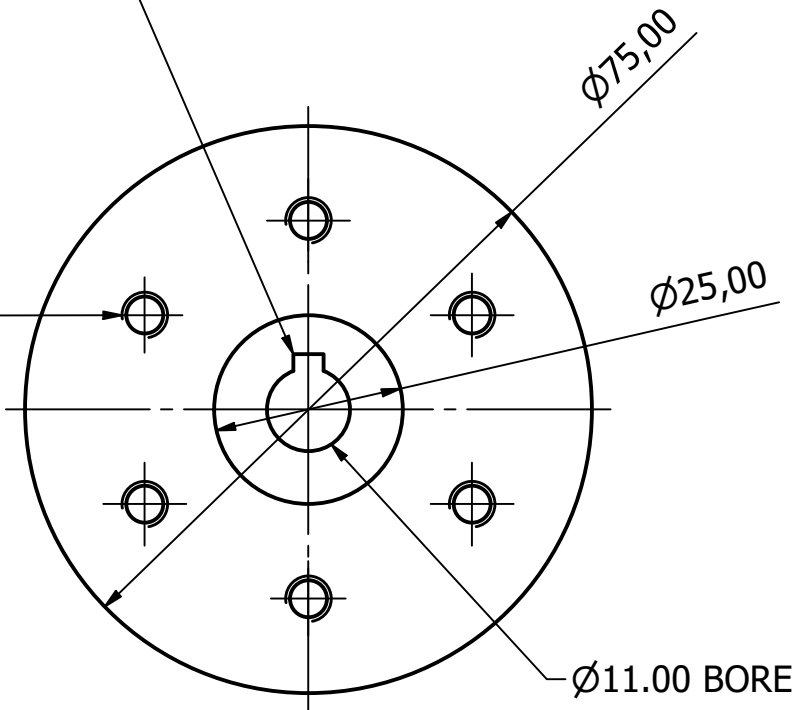


PARTS LIST				
ITEM	QTY	PART NUMBER	DESCRIPTION	MATERIAL
1	1	DH_V2_005	Impact Ring	Polyurethen PU90

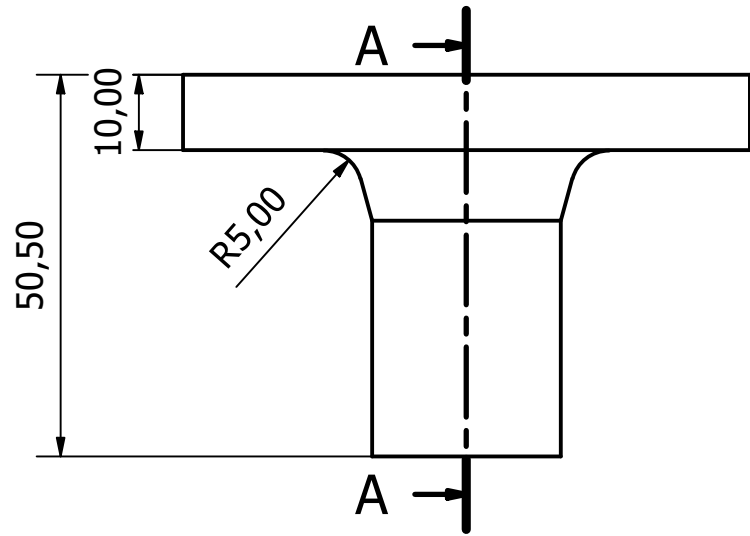
Designed by AV	Checked by AV	Approved by	Date 02/10/2022	
Darachbeg Croft		Impact Ring		
		DH_V2_005	Edition 0	Sheet 1 / 1

4mm INTERNAL
METRIC PARALLEL
KEYWAY

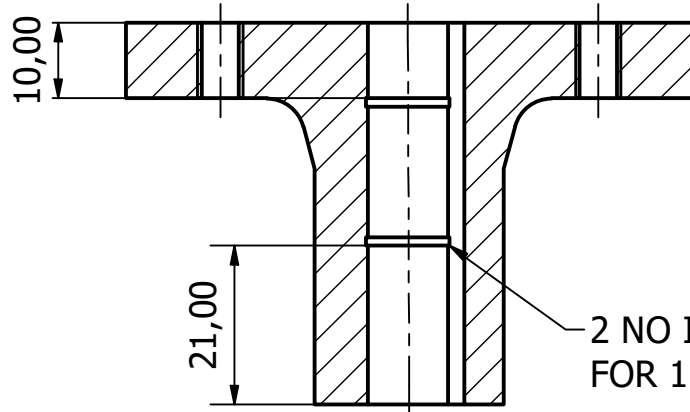
6 No M6x1 - 6H
EQUISPACED



PARTS LIST				
ITEM	QTY	PART NUMBER	DESCRIPTION	MATERIAL
1	1	DH_V2_006	Rotor Hub	Stainless Steel



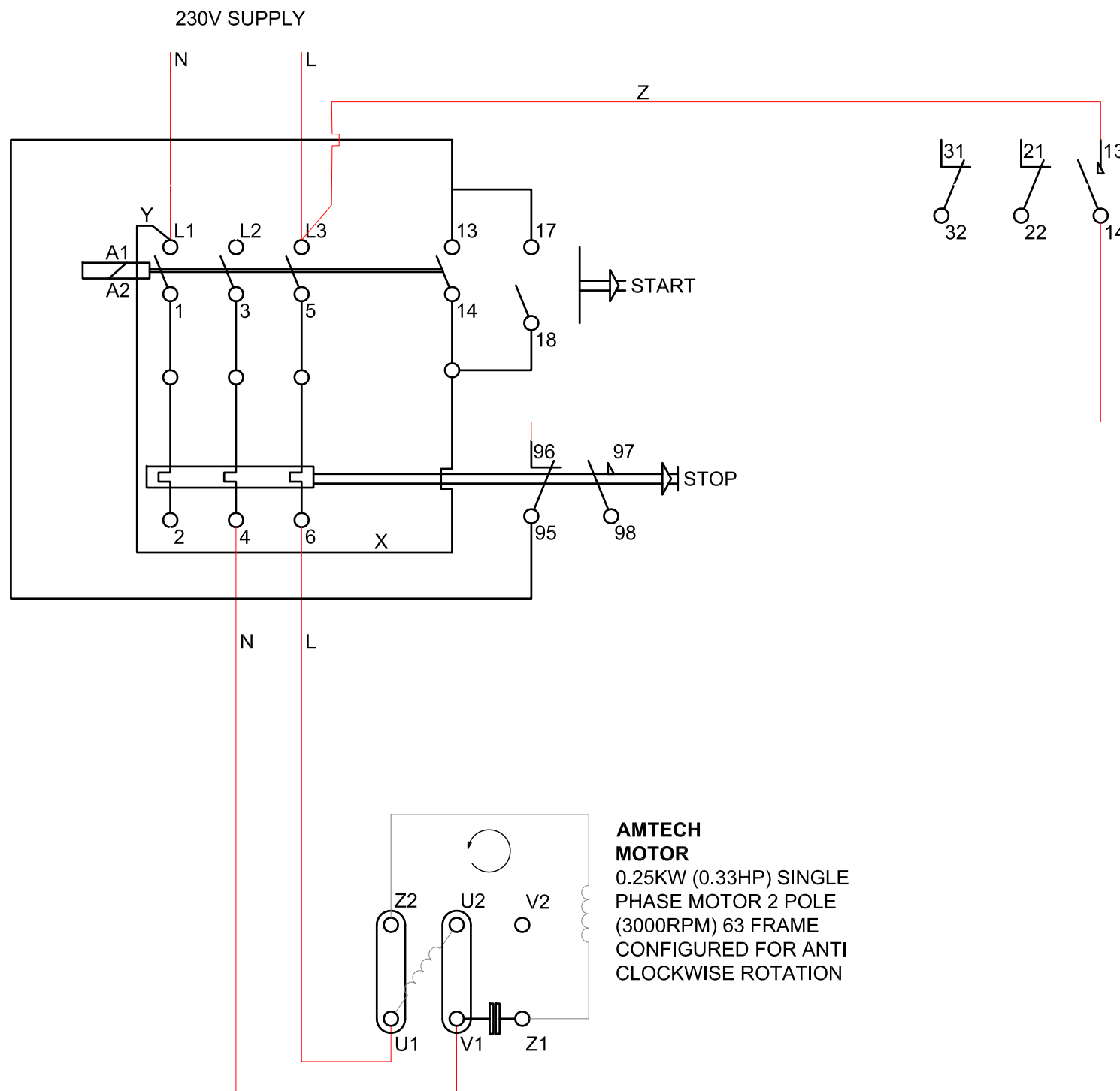
A-A (1 : 1)



2 NO INTERNAL CIRCLIP GROVES
FOR 11mm x 1mm METRIC CIRCLIP

Designed by AV	Checked by AV	Approved by	Date	Date 02/10/2022	
Darachbeg Croft			Rotor Hub		
			DH_V2_006	Edition 0	Sheet 1 / 1

**EATON
ADS8 DIRECT-ON-LINE
MOTOR STARTER**
CONFIGURED FOR SINGLE
PHASE MOTORS-D.O.I
STARTER LOCAL 3-WIRE
PUSH BUTTON CONTROL
WITH EXTERNAL SAFETY
INTERLOCK




**TELEMECANIQUE
SAFETY LIMIT SWITCH**
PART NO XCSD3719P20
CONFIGURED TO OPEN
CONTACT 13/14 IF
ACTUATOR NOT CLOSED

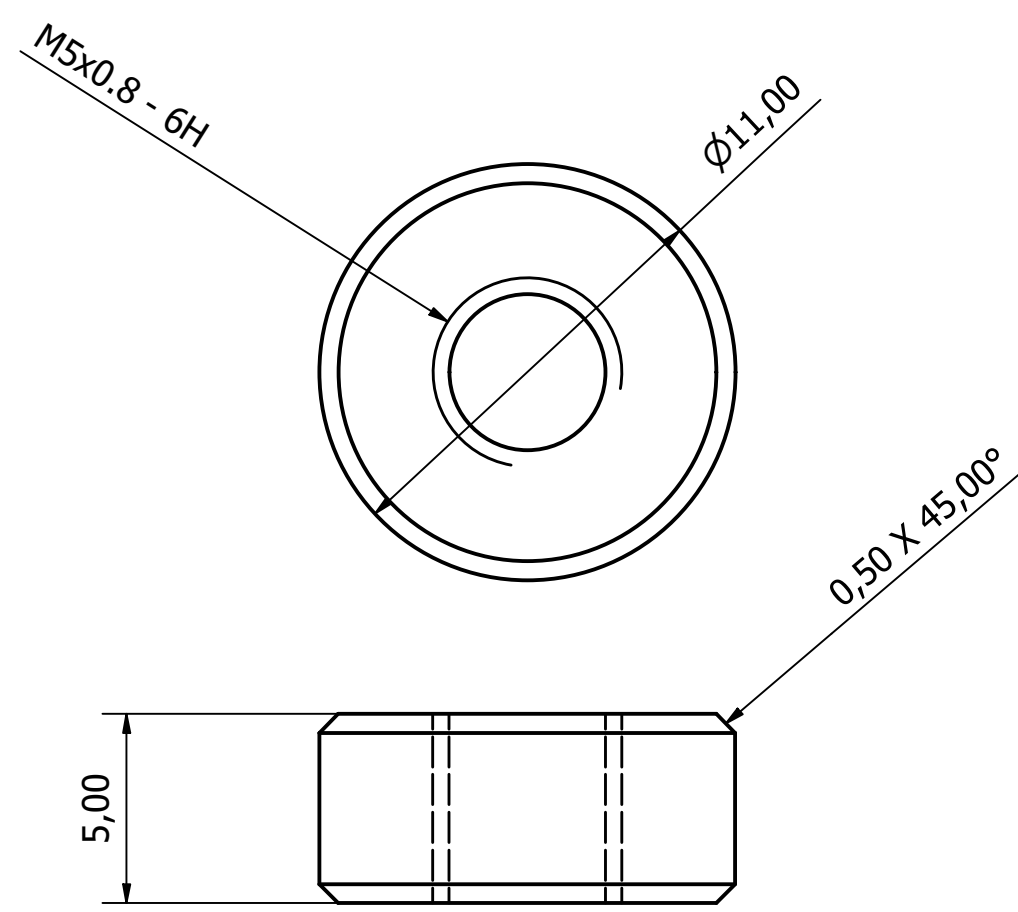
**AMTECH
MOTOR**
0.25KW (0.33HP) SINGLE
PHASE MOTOR 2 POLE
(3000RPM) 63 FRAME
CONFIGURED FOR ANTI
CLOCKWISE ROTATION

SAFETY NOTES

- ELECTRICAL EQUIPMENT SHOULD BE INSTALLED, OPERATED, SERVICED AND MAINTAINED BY OR UNDER SUPERVISION OF A COMPETENT ELECTRICIAN IN ACCORDANCE WITH CURRENT ENGINEERING CODES OF PRACTICE, REGULATIONS FOR THE ELECTRICAL EQUIPMENT OF BUILDINGS (BS7671). NO RESPONSIBILITY IS ASSUMED BY THE AUTHOR ARISING OUT OF USE OF THIS MATERIAL.
- HAZARDOUS VOLTAGE - DISCONNECT ALL POWER BEFORE WIRING ON EQUIPMENT. ELECTRIC SHOCK WILL RESULT IN DEATH OR INJURY.
- IN ADDITION TO THIS DIAGRAM, REFER TO MANUFACTURERS SAFETY / INSTRUCTION MANUAL FOR ALL EQUIPMENT.

Iss	Description	Drawn	Chk'd	Date
0	Original Drawing Issue	AJV	-	30.07.22
Client				
				
Project Title				
DEHULLER V2				
Drawing Title				
SINGLE LINE DIAGRAM				
Darachbeg Croft				
<small>Darachbeg Croft Agricultural Engineering Muirsherrich Fort William PH33 7PB</small>				
Scale Bar				
Scale	Prints from this drawing are UNCONTROLLED unless otherwise indicated			Original Size A3
Project No P001	Drawing No DH_V2_007	Issue 0		

PARTS LIST				
ITEM	QTY	PART NUMBER	DESCRIPTION	MATERIAL
1	1	DH_V2_008	Rotor Hub Washer	Stainless Steel



Designed by AV	Checked by AV	Approved by	Date 02/10/2022	
Darachbeg Croft		DH_V2_008		
Rotor Hub Washer			Edition 0	Sheet 1 / 1